



— A Lincoln Electric Company —

THE INDUSTRY'S MOST COMPLETE PRODUCT LINE



Clean, Quiet, Power™ that is scalable to meet your needs today and tomorrow.



## ELiMENT® LiFePO4 Battery - (Lithium Iron Phosphate) The “heart” and power of the EPEQ® system.

- Includes its own Battery Management System (BMS)
- High energy density for improved capacity, weight, and shelf-life
- Impressive 5-7 year life cycle
- Zero maintenance required
- Designed to fit in compact spaces



## EPEQ® Smart Display

- The EPEQ® System is controlled by a smart display which has proprietary software designed to intelligently monitor and control all EPEQ® components
- Conveniently manage the load applied to the battery based on various factors such as: temperature, heat build-up, duty cycle, assigned function priorities, and power remaining



## Air Compressors

- Driven by highly tuned and specialized permanent magnet AC (PMAC) electric motors
- Available in: 20 CFM @ 150 PSI reciprocating compressor, 30-45 CFM @ 150 PSI rotary screw compressor, 15 CFM @ 120 PSI oil-free scroll compressor, and 4-5 CFM @ 125 PSI cast iron, oil-free compressor



## Portable Welder

- Combines the flexibility of hand-carry, lithium-powered welding with top-level performance
- CC stick welding, 140A option
- Extremely user-friendly
- Lightweight - only 34 lbs.



## AC Power Inverters

- 48V AC Inverter lineup includes multiple pure sine wave high- and low-frequency inverters to fit any need
- Available in four models:
  - 48V, 120V AC, 3kW High-Frequency
  - 48V, 240V AC 5kW (stackable) High-Frequency
  - 48V, 120/240V AC, 3kW Low-Frequency
  - 48V, 120/240V AC, 6kW Low-Frequency
- Remote on/off



## EPTO Hydraulic Power

- Offers the best fit for electric vehicles and vehicles that do not have a traditional power take-off (PTO) setup
- No need for full re-engineering of hydraulic equipment
- Custom solutions available in multiple flow rates and pressures



## Portable EV Charging

- Charge electric vehicles when away from a permanent mount EV charger
- Features the ability to charge an electric vehicle or plug-in hybrid without the need for an additional internal combustion engine (I.C.E.) and without the need to move heavy components
- Level 1 and 2 charging available



EPEQ® Level 1 EV Charger



EPEQ® Level 2 EV Charger



## DC-DC Converters for Auxiliary Power

- Provides power when the vehicle is off for emergency lighting
- 48V to 12V, 60A

## Charging Methods

- The EPEQ® system operates at 48V rather than a standard 12V vehicle charge system. A 48V power source, or a converter, must be used to transform 12V power to 48V power. You can also choose to use shore power.
- DC-DC Converter for charging 12V to 48V, 30A
- Shore Power: 120V AC



## EPEQ® Idle Management (EPEQ® IM)

- Automatically stops and starts your vehicle's engine while continually operating the vehicle's HVAC and accessories
- Reduces fuel consumption, maintenance costs, and carbon emissions
- Provides a universal solution to operate internal combustion engines (I.C.E.), EVs, or hybrid applications.



To make your fleet electrification journey easy, Vanair® is Powering Fleet Electrification™ by offering a complete green technology system with ready-to-go kits and skids.

## Cap•Start® - Purpose Built for Unmatched Engine Starting Speed

**Ideal for large fleets. Up to 3000A of instantaneous engine starting and charging power.**

- Instantly starts multiple vehicles in rapid succession, no downtime to recharge your system
- 12V and 12V/24V charging/starting options
- 240A alternator for fast recharging
- Patented Vanair® Super Capacitor™ (VSC™)
- Perfect for extreme cold weather conditions
- Gas, hydraulic, or battery systems available
- Optional 24 CFM at up to 175 PSI reciprocating compressor system



Shown: Cap•Start® 3000 model.  
Cap•Start® 3000 + Air Light and Cap•Start® 3000 Hydraulic  
models also available.

## Super Boost•All®

### Heavy duty, turn-key jump-starting solutions

- 12/24V models available
- 25 ft. of 2/0 gauge cable with 1000A clamps
- Multiple battery system
- Complete ready-to-go system which includes control box, battery box, battery boost cable, and connection cables



FEATURING  
**PROTECT-ALL®**  
Safety Technology

## Boost•All®

### Portable jump-starting solution for repair shops and garages

- 12/24V model available
- Heavy duty cable and clamps up to 1000A
- Two (2) battery system
- Only 20" wide with extra large pneumatic tires for easy portability
- Fully automated internal AC charger



## 2500A • 33300 Joules<sup>5S</sup> • 12V

**Ideal for passenger vehicles, small SUVs, light and medium trucks, and off-road equipment**

- Jump-starts gasoline engines up to 6 liters and diesel up to 4 liters
- Charges devices including cell phones, digital cameras, tablets, and gaming devices with multiple power ports so you will never be out of touch
- Powers mobile equipment such as your laptop or tools with the convenient AC outlet
- Provides 500 Lumen LED Flashlight with High/Low and SOS Emergency Strobe Functions
- Convenient, hand-carry jump-starting



**Lightweight! Only 4.4 lbs.!**

**PROTECT-ALL**  
Safety Technology



## 5000A • 66000 Joules<sup>5S</sup> • 12V

**Ideal for work vans, duallys, commercial trucks, and boats**

- Instantly starts gasoline and diesel engines up to 10 liters
- Charges phones, digital cameras, tablets, and gaming devices with multiple power ports so you will never be out of touch
- Large metal clamp with 1/0 gauge jumper cables
- Solid-state technology control provides longer durability and eliminates wear points
- DC power port, USB ports, 12V output port, and 500 Lumen LED Flashlight with High/Low and SOS Emergency Strobe Functions



**Lightweight! Only 9.6 lbs.!**



**PROTECT-ALL**  
Safety Technology

## 10,000A • 133200 Joules<sup>SS</sup> • 12V

**Ideal for semis, heavy-duty vehicles, buses, construction and agriculture equipment**

- Instantly starts diesel engines up to 16 liters
- Charges any USB device including cell phones, digital cameras, tablets, and gaming devices with multiple power ports so you will never be out of touch
- Large metal clamp with 1/0 gauge jumper cables
- Solid-state technology control provides longer durability and eliminates wear points
- DC power port, USB ports, 12V output port, and 500 Lumen LED Flashlight with High/Low and SOS Emergency Strobe Functions



**Lightweight! Only 11.1 lbs.!**



**PROTECT-ALL**  
Safety Technology

## 10,000/5000A • 166500 Joules<sup>SS</sup> • 12/24V

**Ideal for semis, buses, and heavy-duty construction and agriculture equipment**

- Instantly starts diesel engines up to 16 liters
- Large metal clamp with 1/0 gauge jumper cables
- Solid-state technology control provides longer durability and eliminates wear points
- Easily charge phones, digital cameras, tablets, laptops, and portable gaming devices with multiple power ports
- DC power port, USB ports, 12V output port, and 500 Lumen LED Flashlight with High/Low and SOS Emergency Strobe Functions



**Lightweight! Only 18.5 lbs.!**



**PROTECT-ALL**  
Safety Technology



# Engine Driven Air Compressor Systems

## Pro Series



### Durable, rugged power

- 25 - 35 CFM at up to 175 PSI, reciprocating air end
- 30 gallon or remote air tank options
- 11.7 HP Honda® engine



Shown: Pro 35

## Contractor



### Compact. Versatile. Reliable.

- 20 CFM at up to 150 PSI, reciprocating air end
- 5kW peak watt AC generator
- 10 gallon, 30 gallon, or remote air tank options
- 14 HP Kohler® or Vanair® VNR680 engine options



## Viper™ Gas



The ideal choice to operate: 90 lb. jackhammers, 4" piercing tools, pavement breaking, monument engraving, irrigation services, post-pounding, directional boring, and more.

- Up to 80 CFM and up to 150 PSI rotary screw air compressor
- Now available with zero-turn cart
- Large fuel tank to provide six and half hours of runtime at 70% duty cycle
- Gas engine
- Auto start/stop for fuel savings and noise reduction



Shown on zero-turn cart

## Viper™ Diesel



Ideal for 90 lb. jack hammers, and 1 1/2" impact wrenches at a fraction of the cost of a tow-behind!

- Up to 80 CFM and up to 150 PSI rotary screw air compressor
- Diesel engine
- Auto start/stop for fuel savings and noise reduction



# Utility Mount Air Compressors

**Ideal for paint stripping, soda blasting, shotcreting, and sewer rehabilitation**



- Curbside serviceability
- Automatic 0 to 100% capacity control
- Two stage dry type air filter - external access
- Two 3/4" service connections
- Oil level sight gauge
- Steel fuel tank
- Side by side coolers for compressor and engine
- Compact size for truck mounting
- Curbside fuel fill & air filter access
- Noise level limited to maximum of 76 dBA at 7 meters
- All drains end mounted
- Automatic shutdown and protection system
- Automatic blowdown valve
- Unloaded starting



## V185-UT

- 185 CFM at up to 100 PSI
- Large, 108mm diameter rotary screw air end
- Isuzu® engine

## V210-UT

- 210 CFM at up to 150 PSI
- Large, 108mm diameter rotary screw air end
- Auxiliary A-pad
- John Deere® engine

## V260-UT

- 260 CFM at up to 100 PSI
- Large, 127mm diameter rotary screw air end
- Auxiliary A-pad
- John Deere® engine

## Reliant™ RC40



**Perfect for service and mechanic trucks**

- 30 - 40 CFM
- Up to 175 PSI
- Reciprocating air end
- Heavy-duty steel design



## Reliant™ RC40-L



**When weight matters**

- 30 - 40 CFM
- Up to 175 PSI
- Aluminum air end and canopy to reduce weight
- Reciprocating air end
- Reversible hinged hood
- Relocatable and remote mountable gauges



## Reliant™ RS45



The most powerful, lightweight system in its class

- 30 - 45 CFM
- Up to 150 PSI
- Rotary screw air end
- Aluminum canopy and frame
- Reversible hinged hood
- Relocatable and remote mount gauges



## Reliant™ RS85-L



Powerful enough to run a  
90 lb. jack hammer

- 60 - 85 CFM
- Up to 125 PSI
- Aluminum air end and canopy to reduce weight
- Rotary screw air end
- Reversible hinged hood
- Relocatable and remote mount gauges



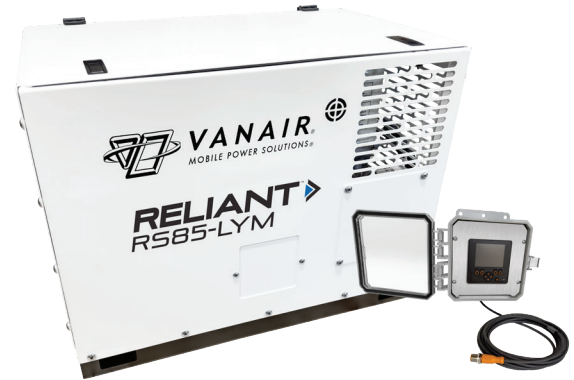


## Reliant™ RS85-LYM



Designed for the rigorous demands of surface and subsurface mining operations

- 60 - 85 CFM
- Up to 150 PSI
- Hydraulic driven
- Direct-driven aluminum encapsulated rotary screw air end



## ADHD



Versatile, big air power abovedeck

- 125 - 185 CFM
- Up to 150 PSI
- Rotary screw air end
- Multiple configurations
- Available with side-mount air/oil separator tank or vertically stacked air/oil separator tank



## Air N Arc® 150



### The system for light to medium industrial repair

- Up to 20 CFM and 150 PSI reciprocating air compressor
- 5kW peak generator
- 190A, 12/24V boost (Standard for Vanair® VNR680 20 HP engine only)
- 50A, 12V charge (Standard for Vanair® VNR680 20 HP engine only)
- Up to 190A welding power
- Kohler® 14 HP or Vanair® VNR680 20 HP engine
- 20 HP unit available with remote control panel
- 10 gallon twin, 30 gallon, or skid options available
- 11.5 gallon fuel capacity or tie to chassis fuel system



## Air N Arc® 250-L



### Powerful and lightweight

- Up to 24 CFM and 175 PSI aluminum reciprocating air compressor
- 5kW peak AC generator
- 300A, 12/24V boost
- 50A, 12V charge
- Up to 250A welding power
- 23 HP EFI Kohler®
- Remote mount control panel
- 30 gallon, or skid options available
- Optional remote 11 gallon fuel capacity or tie to chassis fuel system



## Air N Arc® 300 Gas or Diesel



**Increase efficiency, productivity, and profitability with one system**

- Up to 40 CFM and 175 PSI rotary screw air compressor
- 7kW peak generator
- 300A, 12/24V boost
- 50A, 12V charge
- Up to 300A welding power
- Remote mount control panel
- 26.5 HP EFI Kohler® gas or 25 HP Kubota® diesel engine
- 12 gallon integral fuel tank or tie to chassis option



Gas only



Included with  
Diesel Model



## Air N Arc® 300 Gas or Diesel Compact

**Maintain functionality with more space and less weight**

- Up to 40 CFM and 175 PSI rotary screw air compressor
- 7kW peak generator
- 300A, 12/24V boost
- 50A, 12V charge
- Remote control panel
- Up to 300A welding power
- 26.5 HP EFI Kohler® gas or 25 HP Kubota® diesel engine
- Available in a skid mount for greater mounting flexibility
- Tie to chassis fuel system



Gas only



Included with Diesel Model



## Air N Arc® 300 Hydraulic



**All the power... none of the weight**

- Hydraulically driven
- Up to 40 CFM and 175 PSI rotary screw air compressor
- 7kW generator
- 300A, 12/24V boost
- 50A, 12V charge
- Remote control panel
- Up to 300A welding power
- Open center hydraulic drive system



## Air N Arc® I-300



### Six forms of power

- Up to 40 CFM and 175 PSI rotary screw air compressor
- 7kW AC generator
- 300A, 12/24V battery boost
- 50A, 12V charge
- Up to 300A welding power
- Remote control panel
- Up to 13 GPM and 3000 PSI hydraulic pump
- 25 HP Kubota®, liquid cooled engine (Tier 4 compliant)



## Air N Arc® 330 Diesel



### Featuring Lincoln Electric® welder and generator

- Up to 60 CFM and 175 PSI rotary screw air compressor
- Lincoln Electric® 10kW AC generator
- 300A, 12/24V battery boost
- 50A, 12/24V, optional 36/48V charge
- Lincoln Electric® Welder, up to 330A
- Remote control panel
- 24.8 HP Kubota®, D902-E4B, 3-cylinder water cooled engine (Tier 4 compliant)





## PowerFlex™ AE Diesel

- Up to 40 CFM and 150 PSI rotary screw air end
- 6.8kW AC generator
- Integrated 12 gallon fuel tank or tie to chassis fuel system option



## PowerFlex™ AE Gas

- Up to 40 CFM and 150 PSI rotary screw air end
- 6.8kW AC generator
- Integrated 12 gallon fuel tank or tie to chassis fuel system option



## PowerFlex™ AEH

- Up to 40 CFM and 150 PSI rotary screw air end
- 6.8kW AC generator
- Up to 13 GPM hydraulic flow
- Up to 3000 PSI hydraulic pressure



## The Choice is Yours

The unique flexibility of the PowerFlex™ Modular System allows you to purchase the specific functionality you need for your application and budget.



# High Capacity Drill Compressor Modules

## When You Need Serious Air Power

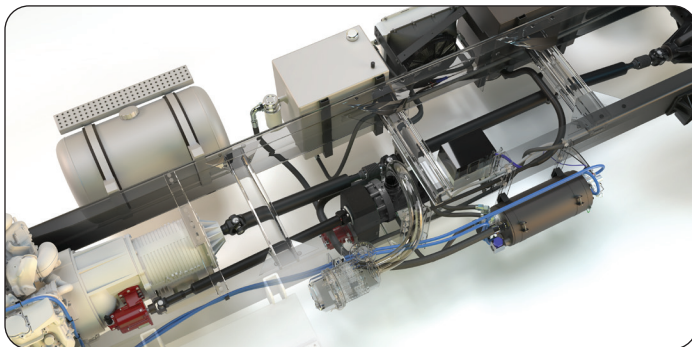
A compact solution to limited space requirements on today's rigs

- Up to 700 CFM and 250 PSI single-stage
- Up to 1350 CFM and 350 PSI two-stage
- Rotary screw air end
- Tailored to meet your customer's needs
- Modular and compact design



# The Biggest Advancement in PTO Underdeck Systems in Over 50 Years!

The industry demanded higher dependability, greater durability, and lower life cycle cost. And we responded.



In 1972, Vanair® developed the world's first vehicle-mounted, PTO driven rotary screw air compressors, establishing the industry and meeting the demand for better mobile workplace productivity. We've built on our tradition of listening to our customers with the new PTO Underdeck Technology. The unprecedented innovations we've engineered into our systems answer your demand for improved reliability, increased uptime, and reduced life cycle cost. Available exclusively from Vanair®.

No other manufacturer offers these advanced technologies, ensuring the highest reliability and lowest life cycle cost for your fleet. These innovative features, plus the weight and space reduction, ease of use, and greater mobility you've come to expect from the Vanair® Underdeck PTO, make it the perfect choice for increased uptime.

## Exclusive Underdeck Standard Features

Optional Remote Mount  
NEMA box



# FailSafe®

PATENTED TECHNOLOGY

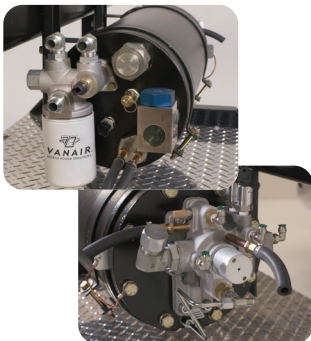
*Dual Sensor Redundancy System*

- Provides backup in case critical sensors fail
- Virtually eliminates downtime for increased uptime
- Seamlessly switches to back-up sensors without any interruption of the system's operation
- Also available in an optional, remote mount, weatherproof NEMA box

# XERO®

PATENTED TECHNOLOGY

**RAPID BLOW DOWN TANK**



- Near-instant blow down time for immediate compressor disengagement/re-engagement, while simultaneously allowing for complete out-of-level operation
- Start/stop operation reduces frustration of waiting for system to be reactivated
- Eliminates oil carry-over since there is virtually no blow down time
- Provides up to 15% angle of operation from side-to-side, or front-to-back
- Designed with built-in thermal valve, temperature thermistor, pressure relief valve, single and dual pressure regulators, and oil filter assembly
- Integrates the components and manifold into the tank for faster installation plus more dependable and efficient performance with less maintenance
- JIC and O-Ring fittings for connecting points reduce leak points by over 60%



**UltraLife®**

PATENT PENDING

*6000 Hour Air/Oil Separator Element*

- Innovative design offers the lowest cost of ownership in the industry
- Six times more life than the nearest competitor's spin-on coalescer element
- Fifteen times more life than an underhood design means the coalescer will last longer than the life cycle of your vehicle
- Assured anti-static grounding system



## Brushless Fan Compressor Oil Cooler Package with Thermal Protection

- New impact resistant PL-ABS composite enclosure for optimal air flow and efficiency
- Certified IP68 weatherproof solid-state brushless fan with integral thermal protection
- Designed for continuous operation in 125°F ambient temperatures
- Industry-leading 40,000-hour design life



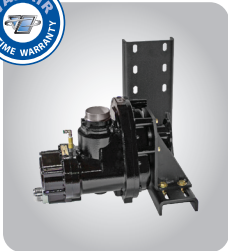


# V-TEC II

VANAIR® TOTAL ELECTRONIC CONTROL

The V-TEC® II Control System provides clear, informative, and intuitive operation, as it automatically controls all the new features. Other advantages include:

- Infinitely variable to reduce fuel, noise, and wear and tear on the engine
- Reliable harnesses and simplified wiring
- All harnesses are designed and tested in accordance with IPC/WHMA-A-620C standard
- Utilizes Deutsch® waterproof connectors for ALL connections
- Easy plug and play for faster installs and straightforward diagnostics
- Vanair's unique torque management for a soft, smooth engagement of the PTO, protecting the system and driveline
- Onboard diagnostics and prescribed maintenance intervals
- USB updatable and rugged IP67 rated weatherproof display with low-light and bright light viewability
- No third-party programming required



## Sullair® Air End

The Sullair® Air End is manufactured in the USA and recognized throughout the world as the most durable rotary screw air compressor on the market. In addition to its unmatched dependability and lifetime warranty, our air end offers:

- 110,000-hour design life
- Lowest input speeds on the market. Lowest input speed = lowest engine RPM.
- Over 18 standard gear ratios available for greater efficiency for lower horsepower requirements and noise reduction
- 100% duty cycle
- Integrated inlet control valve



### **ThermalGuard®** *Weather Protection Kit*

PATENTED TECHNOLOGY

- Patented ThermalGuard® uses the vehicle's warm engine coolant to preheat the compressor oil and regulators to prevent oil starvation and freeze-ups during cold conditions
- Aids in the elimination of moisture
- Arrives at the worksite without thick, cold oil or frozen regulators to compromise the compressor operation
- No moving parts or problematic electrical connections



### **Optical Oil Level Sensor**

- Increased reliability readings over other types of oil sensor technology
- No moving parts
- Fully protected in a stainless steel encased sensor housing
- Provides reading at system start-up
- Built-in protection if the operator forgets to check the oil system

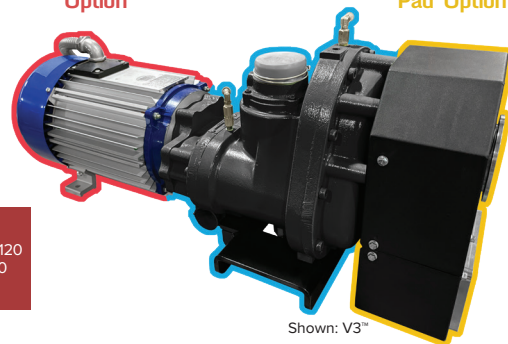
# What Kind of Underdeck Power Do You Need?

<b>UDSM ▶ UDHD ▶</b> AIR ONLY	PTO Shaft Driven	Air (CFM) - 60, 85, 125, 160, 185, 200, 300, or 425	Air (PSI) - 100-150			
	Hydraulic Driven	Air (CFM) - 60, 85, 125, 160, or 185	Air (PSI) - 100-150			
<b>XCITE ▶</b> GENERATOR ONLY	PTO Shaft Driven	Output (kW) - 6.8, 10, 16.9, 20 or 25	Voltage - 120 or 120/240			
	Hydraulic Driven	Output (kW) - 4, 7.5, 8.5, 10, 12 or 15	Voltage - 120 or 120/240			
<b>GENAIR ▶</b> AIR & GENERATOR	PTO Shaft Driven	Air (CFM) - 125, 160 or 185	Air (PSI) - 100-150	Output (kW) - 6.6 or 9.6	Voltage - 120 or 120/240	
<b>V2 ▶</b> AIR & HYDRAULIC	PTO Shaft Driven	Air (CFM) - 125, 160 or 185	Air (PSI) - 100-150	SAE B Pump Pad* 77 ft. lbs.		
<b>V3 ▶</b> AIR, GENERATOR & HYDRAULIC	PTO Shaft Driven	Air (CFM) - 125, 160 or 185	Air (PSI) - 100-150	Output (kW) - 6.6 or 9.6	Voltage - 120 or 120/240	SAE B Pump Pad* 77 ft. lbs.
<b>UDSM ▶</b> ALL-IN-ONE POWER SYSTEMS AIR, GENERATOR, HYDRAULIC, BATTERY BOOST/CHARGE, & WELDER	PTO Shaft Driven	Air (CFM) - 125, 160 or 185	Air (PSI) - 100-150	Output (kW) - 10 kW Peak	Voltage - 120 or 120/240	SAE B Pump Pad 77 ft. lbs.
				Battery Boost/Charge 330A, 12/24V, Optional 36V and 48V		Welding 330A

  
Generator Option

  
Air Option

  
SAE B Pump Pad\* Option



\*Pump Sold Separately

Available for:



ISUZU



FREIGHTLINER



Peterbilt



+More!  
2WD & 4WD

# Complete Underdeck Kits

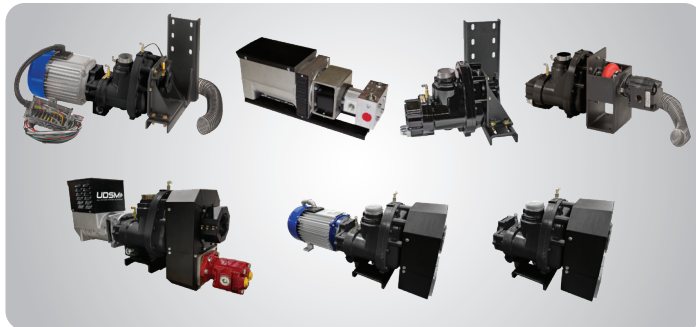
Each Vanair® underdeck kit is specific to the make and model of your vehicle. All kits for trucks contain the following items plus the power unit, such as an air compressor or generator that you select.

- Power unit
- XERO™ Tank with UltraLife® 6000 hour coalescer
- Air filter assembly
- New impact resistant PL-ABS composite enclosure for optimal air flow and efficiency
- Redesigned V-TEC® II display and compressor control system
- FailSafe® Dual Sensor Redundancy System
- Vanguard™ Rotary Screw Compressor oil
- Hosing
- Valving

## All Kits Contain (except XCITE® generators)



## Power Units (standard with FailSafe®, UltraLife®, XERO™ Tank and V-TEC® II)



**FailSafe**  
Dual Sensor Redundancy System



Optional Remote  
Mount NEMA Box

## Optional Features



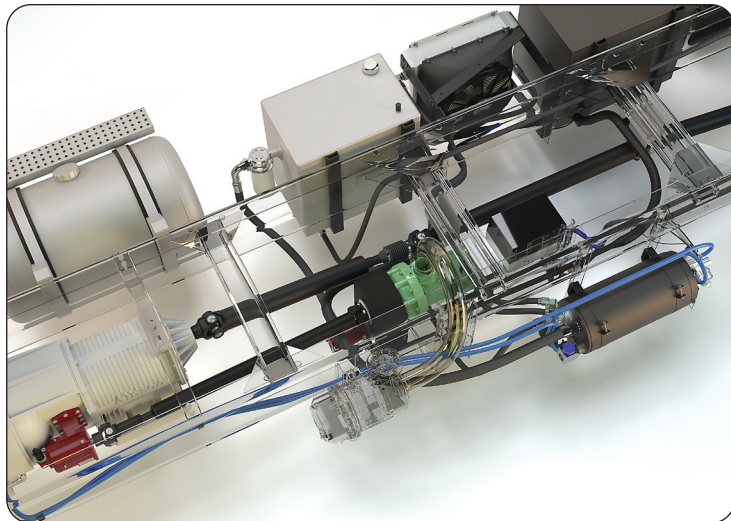
**ThermalGuard**  
Weather Protection Kit



Optical Oil Level Sensor

# Underdeck ALL-IN-ONE Power System®

The PTO Shaft-Driven Underdeck (UDSM) ALL-IN-ONE Power System® is a game-changing innovation that redefines power accessibility for professionals. This revolutionary system offers an impressive six forms of power, positioning it as an indispensable and versatile solution for various needs. The UDSM ALL-IN-ONE Power System® has been ingeniously designed to seamlessly integrate beneath the vehicle chassis, opening cargo space while enhancing overall efficiency.



AIR COMPRESSOR



GENERATOR



WELDER



BATTERY BOOST



BATTERY CHARGE



HYDRAULIC PUMP

## WELDER

- Strike Voltage: 7-8V
- Weld Voltage: 28V
- Output Current Range: 330A Peak
- Duty Cycle (MMA): 70%

## GENERATOR

- 10kW Peak Output
- 120 or 120/240V, 60Hz
- 3600 RPM Speed

## HYDRAULIC DRIVEN POWER

- SAE B Pump Pad: Up to 30 GPM @ 2000 PSI

## BATTERY BOOST/CHARGE

- 330A Peak
- 12/24V Boost/Charge
- Optional 36V and 48V

## SANSGEAR

- Up to 30 GPM @ 2000 PSI
- Extremely Quiet Operation
- Lightweight

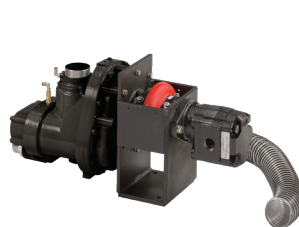
# PTO Shaft-Driven & Hydraulic Underdeck Systems

## Underdeck Air Compressor Systems

Lightweight, space saving  
and cost effective

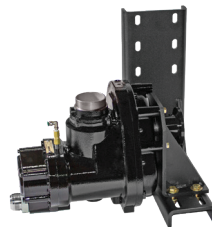
- Rotary screw compressor
- 60 - 1000 CFM
- 100 - 250 PSI

Ready-to-go kits at  
300 CFM @ 250 PSI  
425 CFM @ 100 PSI



**Hydraulic Driven Kit**

- 60 - 185 CFM



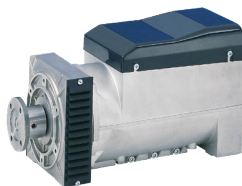
**PTO Shaft Driven Kit**

- 60 - 300 CFM

## XCITE® Generators

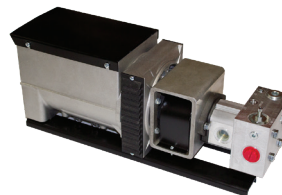
Save weight, space,  
and money

- Single phase
- 120V AC or  
120/240V AC power



**PTO Shaft Driven Option**

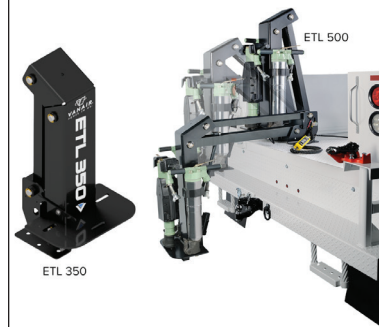
- 6.8kW - 25kW AC generator



**Hydraulic Driven Option**

- 4kW - 15kW AC generator

## ETL - Electric Tool Lift



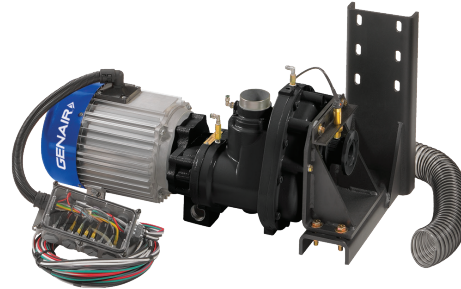
- Three Integrated tool holder positions
- Integrated limit switches
- Various hex tool posts ranging from 7/8" to 1-1/4"
- Integrated actuator brake allows load to be stopped in any position
- Safeties: integrated actuator overload clutch, safety latch, and integrated safety shutoff switch



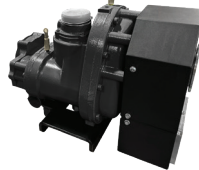
## Genair® Air Compressor/Generator Systems

### Air compressor/generator

- 125 - 185 CFM and up to 150 PSI air compressor
- 6.6kW and 9.6kW AC weatherproof generator



## V2™ Multi-Drive System™



### Air + hydraulic power... one PTO

- 125 - 185 CFM up to 150 PSI air compressor
- Auxiliary SAE B pad for hydraulic pump with torque output up to 77 ft. lbs.

## V3™ Multi-Drive System™



### Three Types of Power...One PTO

- 125 - 185 CFM up to 150 PSI air compressor
- 6.6kW and 9.6kW AC generator
- Auxiliary SAE B pad for hydraulic pump with torque output up to 77 ft. lbs.



———— A Lincoln Electric Company ————

800.526.8817 | [vanair.com](http://vanair.com)   



© Vanair® Manufacturing, Inc. Product improvement is a continuing goal.  
Design and specifications are subject to change without notice or obligation.  
08292024\_CMG

